

Inverell

Official Visitors Guide



choose your own adventure
www.inverell.com.au



Inverell

The
Sapphire
City

choose your own adventure

Index

6
Inverell

8
Fossicking

10
Great Outdoors

11
Copeton Dam

12
Heritage

14
Family Fun

15
Art & Culture

16
National Parks

18
Tasty Treats

19
Retail Therapy

20
RV Friendly

21
Drives & Rides

22
Ashford

23
Delungra

24
Gilgai

25
Yetman

26
Tingha



TourismInverell



@TourismInverell



www.inverell.com.au



tourism@inverell.nsw.gov.au

Natural Wonders & Waterways

History & Heritage

Boutique Shopping

Fossicking & Fishing

Inverell Shire **has all this** & more

Inverell Shire Council acknowledges the Aboriginal traditional owners of the land and its people from within the shire. We pay our respects to Elders past, present and emerging.



Welcome
to
Inverell
Shire

Inverell The Sapphire City

Tucked snugly into the Macintyre Valley at the foot of the New England Ranges, Inverell is known far and wide as "The Sapphire City". As the name suggests, Inverell is one of the true gems of the New England High Country region of NSW and a place that should be on your bucket list to visit.

A mere 427km from Brisbane and 548km from Sydney; Inverell is located on the Gwydir Highway easily accessible via the New England Highway, Newell Highway, touring drives; the Fossicker's Way and Thunderbolt's Way.

The Inverell Shire is within the Kamilaroi Nation and home to local and visiting Aboriginal people representing many Aboriginal tribes and language groups. These include Jukumbal, Kwiambal, Nucoorilma, Anaiwan, Ngoorabul, Marbul and Banbai peoples.

The area remains mostly unspoiled with real country hospitality, one of the town's greatest charms. From beautiful boutique stores to spacious National Parks, magnificent waterways to a diverse selection of gems and minerals, there is something for every member of the family. Inverell has a rich history evident in many facades encompassing the Central Business District, which can be enjoyed by taking our leisurely heritage walk, or wandering through museums, galleries and monuments.

Inverell was settled in 1836 after Alexander Campbell arrived and established 2 properties. Inverell takes its name from the Gaelic, meaning meeting place of the swans; owing to the large number of black swans in the area at the time of settlement. Records show that several Aboriginal tribal boundaries intersected within the Inverell district well before European settlement.

Your adventure awaits in Inverell... Whether you are after an escape from the hustle and bustle to put your feet up, relax and unwind. To explore the great outdoors and experience the best that nature has to offer, or taste the fresh local produce and immerse yourself in history, we have it all.

Age is no barrier with activities and attractions for the whole family to enjoy. Start your own adventure today and discover what Inverell has to offer.

With a warm and friendly smile, Inverell is your home away from home. Come and spend some time with us.

You'll be pleasantly surprised.

choose your own adventure



Fishing



History



Fossicking



Transport



Great
Outdoors



Art



Boutique
Shopping



Nature



Heritage



Inverell

is famous for its beautiful sapphires.

When you're visiting
"The Sapphire City",
try your luck at finding one
of these gorgeous stones!

The best place to start if you haven't tried fossicking before is **Billabong Blue Fossicking Park**. For a small fee they will provide all the equipment you need and show you the correct technique to give you the best chance of finding a beautiful sapphire. The park is also a great place to take the kids as the set up makes it easier for everyone to have a go.

Don't be afraid to get dirty, dress appropriately, take a hat and sunscreen, some drinking water and be prepared to work a little.

If you would like to try your luck elsewhere, there are three Sapphire areas where anyone can have a go for free:

- 🔍 **Pindaroi Lane, 43 km north of Inverell.**
- 🔍 **Frazers Creek at Nullamanna, 20km north of Inverell.**
- 🔍 **Swanbrook Creek Bridge, 12.5km north east of Inverell.**

The alluvial sapphires are the easiest to find and it's best to start in and around a creek bed. Spend some time looking over the area (specking) looking for signs of exposed wash, previous diggings or gems exposed by rain.

The districts rich volcanic soils offer other gems and minerals. One such gem, is the amazing Diamond found near **Copeton Dam**. The **Staggy Creek Fossicking Area** provides a site where you can look for the Diamonds together with Topaz Black Tourmaline and Quartz. This is a rough dry area 28km from Inverell. You should take your own water or dry sieve.

Travelling south to **Tingha** you will drive into a sandy granite area. Together with Tin, the area offers the opportunity to fossick for many different types of Quartz Crystals, including Clear, Smokey, Rutilated Quartz and Yellow Citrine. Visit the creek crossing at **Stannifer** and speak with Sean at Jellybean Junction.

Wallangra located north of Inverell has an area near the hall where you can hunt for Black Tourmaline in Quartz, once again this is a dry fossicking area.

Don't forget to call into the **Inverell Visitor Information Centre** to obtain your fossicking maps showing the locations of the above fossicking sites and information on hints and tips to make your day more enjoyable. Equipment is available for hire. We also have a large gem and mineral collection on display which allows you to view the natural and polished state of the precious stones you may find.

Good luck on your fossicking adventure!

There is a selection of shops in town

where you can take your stones

to be cut and polished.





The Great Outdoors

Photo by Mary Wheeler



Inverell has a diverse range of activities to suit any age, including bush walking, fishing and boating, cycling, kayaking and all types of sporting facilities. Why not take the time to explore the great outdoors in Inverell.

There are some beautiful National Parks within the district. Pack a picnic lunch and explore the numerous parks with something to suit everyone.

Lake Inverell is a wildlife refuge, recreation reserve and a popular kayaking, fishing and bird watching area. Enjoy the picturesque views from the boardwalk & viewing pontoons. Located 2km from the centre of town on Lake Inverell Drive.



WWII Remembrance Riverwalk hugs the Macintyre River and is a 5km pathway that highlights some of the natural beauty and surroundings of Inverell.

McIlveen Park Lookout is located 4km west from the Inverell Central Business District. Here you can see the commanding views back across the township of Inverell and ranges further east. You can even see the wind turbines off in the distance. A view not to be missed!

Pindari Dam is located on the Severn River, just 63km north of Inverell. The dam is surrounded by untouched native eucalypt woodlands and is the perfect spot to drop in a line and relax.

Copeton Dam



At 3 times the size of Sydney harbour, **Copeton Dam** is a massive body of water. Water sport enthusiasts love the expansive waters which are perfect for water skiing, sailing and kayaking. A plentiful supply of Yellow Belly, Murray Cod, Catfish and Silver Perch also make it a fisherman's paradise.

Reflections Holiday Parks - Copeton Waters is located only 40km from Inverell and is a 900 hectare recreational and adventure playground. Accommodation and camping facilities are available including powered and unpowered sites along with a general store and kiosk. In front of the Northcott Centre is an Adventure Playground, Splash Park and Giant Jumping Pillow, very popular with kids of all ages. Other activities which the park offers are a maintained golf course, floodlit tennis courts, walking tracks, picnic facilities and free barbecues.

Copeton Northern Foreshores is located only 17km south of Inverell. Perfect for day visits or longer stays, with camping facilities available including powered and unpowered sites and an amenities block. The reserve has a resident caretaker/ranger and features a splash park and children's playground, kiosk, laundry, showers/amenities, Communal Hall for hire, free gas BBQs and much more. The area has undergone a major state of the art upgrade and now houses the longest recreational boat ramp in the southern hemisphere.

Copeton is a fisherman's paradise

being one of the only inland waterways

with no closed season for Murray Cod.





Records show that several Aboriginal tribal boundaries were within the Inverell district well before European settlement and many local villages adopted Aboriginal names and are still known by these names today.

The man who was to give Inverell its name and lay the foundations for today's modern community was Alexander Campbell. A Scottish immigrant, Campbell was employed by Peter Macintyre in the Hunter Valley. In March 1835, he set out to explore the New England. Campbell established Byron Station for his employer and Inverell Station for himself. The first town store was established by Colin and Rosanna Ross. The name Inverell comes from Gaelic with "Inv" meaning a meeting place and "Ell" meaning swans. It was so named because of the many swans in the area when it was settled.

If you are interested in the history of the area you may enjoy a visit to the **Inverell Pioneer Village**, the **National Transport Museum** and the **Wing Hing Long Museum** or you can make your own way around some of our other historical sites.

Inverell Visitor Information Centre has a booklet "**A Heritage Walk in Inverell**" which is a great way to have a look around the centre of the town whilst learning about its heritage.

inverell.com.au

Inverell Pioneer Village is located on the Tingha Road a short drive from the Central Business District. Take a stroll through history as you wander through the grounds. The buildings are authentic and have been relocated to create the village. Come and see the Pioneer Village for yourself, bring a picnic lunch and enjoy the tranquility of days gone by.

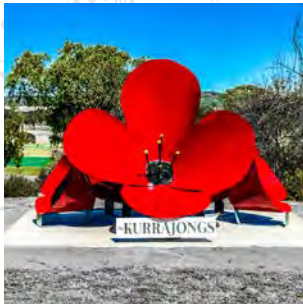
The National Transport Museum is located on Rifle Range Road in a new 4000 square metre facility. See the vast collection of more than 120 exhibits from over 100 years of transport in Australia. Some of the vehicles on display include a 1906 Dayton (believed to be the only one left worldwide), 1912 Renault, various Holdens and Fords including GT Falcons and wide range of Chev's just to name a few. Other displays include Dolls, Wedding Dresses and Cake Icing.

Inverell and District Bicentennial Memorial is located in Sinclair Park. The memorial features 3 courtyards that are statements in history. Each courtyard contains carved mosaics that graphically depict the flow of life from the pre-cambrian age to the year of the Bicentennial. The subjects of the plaques are ordinary people, and how they, and their mode of life, has changed down through the ages.

Scottish Memorial Cairn is also located in Sinclair Park, it pays tribute to the district's pioneers, later generations and families whose endeavours have contributed to its success since the 1830s. The Cairn was unveiled in 1999, which was the same year that Inverell Shire adopted the Clan Mitchell Tartan as the official Tartan for the district.

The Kurrajong Memorial is located on the Gwydir Highway 1km east of Inverell's CBD, the Memorial is dedicated to the 2 groups of young men who enlisted during World War I and departed from Inverell in early 1916. Although some 600 young men had already volunteered from the district by the end of 1915, the Kurrajongs contingent was the largest group of recruits to ever leave an Australian country town.

Wing Hing Long Museum can be found in Tingha, just 24km from Inverell. This little store has been turned into a museum to raise awareness of the contribution the Chinese made to rural communities in NSW.






Family Fun



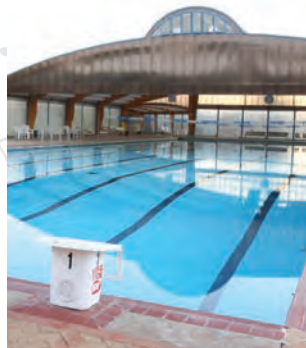
Inverell Parks

Inverell's parks are the perfect place for a picnic, a place to relax and unwind and a place for the family to play.

 Campbell Park	Campbell St
 Victoria Park	Vivian St
 Lions Park	Old Bundarra Rd

Inverell Memorial Swimming Pool

While you are in the area, take the opportunity to take a dip in the Heated Swimming Pool open all year round 7 days a week.



Lake Inverell Off-Road Recreation Circuit

This fantastic 1.6km off-road track network provides a place for individuals, families and groups to get involved in outdoor activities in a safe location which is away from the dangers of the road network. The track has been designed to comply with Cycling NSW requirements making it suitable for all skill levels. A Mountain Bike Track and over 10 kms of cycle paths make Inverell a cyclists dream.



Local Markets

Sapphire City Markets are held in Campbell Park on the first & third Sundays of each month. You can find something for everyone from local produce to arts and crafts for purchase along with local music. The Farmers Market is held the second Saturday of the month at the community garden, where you can purchase produce direct from the grower.

Inverell Public Library

Is open 6 days a week in Campbell Street and boasts a huge collection of over 50,000 items available for public use. They also provide children's activities, study rooms, internet access plus computer and printing facilities.



Art & Culture



The local landscape
has been the subject of
famous artist's work.

Most notably,
the well known
Australian artist
Tom Roberts

The Inverell Art Gallery is a community gallery, operated by the Inverell Art Society. It is open 6 days a week and holds varying styles of exhibitions throughout the year, featuring both local and visiting artists. The Inverell Art Society Competitive Exhibition is held each October and attracts exceptional artists from all around the country. The art trail continues with a visit to Art Life Studio & A.K. Bellinger Gallery.

The Meandering Macintyre footpath mosaic can be found outside the Inverell Art Gallery in the Evans Street Cultural Precinct. The mosaic, measuring 90cm across and 94m long, represents the flow of the Macintyre River. It was designed and created by members of the Inverell Art Society and their group of dedicated volunteers with assistance from Inverell Shire Council, service clubs and community members. 1,500 hours of volunteer work went into the design and construction. This unique attraction is not to be missed.

Goonoowigall Soundtrail

This interactive experience was a partnership between Inverell Shire Council and the indigenous families who lived at the Goonoowigall "Fringe Camp". The Soundtrail serves to celebrate indigenous culture, educate through the telling of their stories and preserve the oral history of these families for years to come.

Simply download the **free** soundtrails app from the App Store or Google Play. Then download the Goonoowigall Soundtrail and when you visit each point, the stories will automatically start using the GPS on your device.



National Parks



Kwiambal National Park (pronounced Kigh-am-bal) lies 25km north west of Ashford. The Macintyre River rushes through sculpted granite gorges and plunge pools at Macintyre Falls before meeting the junction of the Severn River.

The park's 3077 hectares of woodlands include rugged valleys and waterfalls, with long waterholes lined with river red gums, a perfect spot to throw in a line. The Park has a variety of different paced walking tracks varying from 600 metres through to 7km and all sign posted and graded from easy to difficult.

Visit the **Limestone Caves** that are home to rare bats and magnificent limestone formations. Please respect the bats right to remain undisturbed. When visiting keep your voice to a whisper and shine lights away from the bats when exploring the caves.

There are all-weather gravel roads to the lookout at **Macintyre Falls** and both the Lemon Tree Flat and Kookabitta picnic and camping areas beside the Severn River. The camping areas feature toilets, fireplaces, BBQs and campers should bring their own drinking water.



Barayamal National Park was established to conserve nature but walk-in visitors are welcome to explore and enjoy the area. Barayamal (pronounced barrier-mull, an Aboriginal word for black swans) is accessed only by foot, through the Lake Inverell reserve. The park protects the rare grassy white box woodland. Visitors can appreciate the native wildlife on the 6km walking track through the park. The walk takes you through a dry woodland of box, gum and stringybark trees. Take binoculars to see more birds and walkers should also carry suitable supplies of drinking water. You are sure to enjoy this unique walking track.

Kings Plains National Park is a rocky woodland best known for its still pools, seasonal waterfalls and wildflowers. It is an important conservation area protecting mature old ironbark & cypress pine woodlands. Rock-hop down the creek, scramble through dry woodlands, or sit and watch the wildlife. There are picnic and camping areas available with tables. Located 47km north east of Inverell off Swanbrook Road.

Goonoowigall State Conversation Area (pronounced gunny-wiggle) is an Aboriginal word meaning “wallaby rock”. This scenic granite country has low hills and large boulders marking the skyline. The main entrance is located on the Tingha Road 5km south of Inverell. The conservation area covers 1057 hectares and parts of it have been a flora and fauna reserve since 1920. The area has a number of attractive picnic spots and 10kms of walking tracks are provided to points of scenic and historic interest. Delve into the local indigenous heritage through the Goonoowigall Soundtrail. Just download the Soundtrail app on your mobile device and enjoy the stories as told by the former residents and their descendants.

Whilst in the National Parks, please be respectful of the environment.

Choose an outdoor adventure and explore the best nature has to offer within the Inverell district!



Tasty Treats



The advantage of living in such a rich agricultural area is the abundance of great quality, local produce that enhances the flavour of any meal.

Be tempted by the delicious smells of our local cafes and bakeries with their fresh daily creations on offer.

Enjoy a relaxed meal at one of our cozy cafes, an a la carte dining experience at one of our many restaurants or if you are just passing through or on the run, there are lots of eateries and take away places to choose from which will serve you quickly and with a smile.

A variety of clubs, pubs and restaurants also offer relaxed dining, great value hearty meals and live entertainment.

Grab a coffee while you're here from any one of the cafes serving good quality brews. There's a great range to choose from. With fresh ingredients and friendly service, relax and enjoy!

The wines from the area are unique in Australia due to the cool winters and high altitude and the local vignerons are once again making a name for themselves by winning awards in wine shows around the country and internationally.

The planting of olive groves across the region over the last 3 decades has underpinned what is now a well respected olive industry, producing some fine oil, table olives and olive oil products. A walk in an olive grove is a very peaceful and calming experience and definitely good for the soul.



Retail Therapy



When you're on the road travelling around the country, it's rare to pull into a town and find something really special. Inverell is one of those places, it has a beautiful retail precinct framed by heritage buildings. Facades face the paved footpaths that are softened by the foliage of the trees. The mix of national chains and charming boutique stores are second to none and there are lots of places to stop in for a bite to eat.

Apart from being a service centre to the outlying rural sector, Inverell provides all major services including, health, beauty, automotive and finance.

Our incredible boutique stores truly set this shopping precinct apart. Whether it's modern teenage fashion, fabulous footwear, elegant women's evening wear or classic men's clothes,

all fashion needs are stylishly catered for.

You'll also be tempted by our lovely homewares, local produce and unique giftware shops. The front window displays alone make it difficult to walk past without dropping in.

As you would expect, being known as "The Sapphire City," Inverell has a great selection of jewellers. You can find something special in any one of the many jewellery shops in town.

If you are just passing through Inverell, we have all the necessary service providers, including fuel, caravan repairs, spare parts, plus 4 x 4 and camping supplies.

Enjoy your time shopping in Inverell where personal, country service makes shopping a real pleasure.



RV Friendly



Camping Spots:

Delungra Showground
Inverell Street, Delungra
(02) 6724 8275 - Fees Apply

Graman Hotel - Paddock
Yetman Road, Graman
(02) 6725 6491

Inverell Showground
Tingha Road
(02) 6722 3435 - Fees Apply

Kwiambal National Park
via Ashford-Wallangra Road, Ashford
(02) 6736 4298 - Fees Apply

Pindari Dam
Pindari Dam Road, Ashford

Copeton Dam Northern Foreshores
Auburn Vale Road
(02) 6723 0250 – Fees Apply

Reflection Holiday Parks - Copeton Waters
Copeton Dam Road
(02) 6723 6269 – Fees Apply

Copeton Dam Eastern Foreshores
Howell Road, via Gilgai

Tingha Gems Caravan Park
91 Swimming Pool Road, Tingha
0447 810 237 – Fees Apply

Public Dump Point:

Inverell Showground (see caretaker).
Ashford Caravan Park.
Delungra Showground.
Yetman Rest Area

Short Term Rest Areas:

Bonshaw Weir Texas Road, north of Bonshaw.
No amenities are available.

Wells Crossing
Pindari Dam Road, Ashford. Lions Rest Area,
located near Emu Bridge south of Bundarra.

Swan Vale, on the Gwydir Highway, between
Inverell and Glen Innes.

Three Mile Bridge, Bonshaw Road, north of
Ashford.

Parking in Inverell:

Parking for long vehicles is available in Captain
Cook Drive, adjacent to the Macintyre River and
close to the Central Business District.

Limited long vehicle parking is available at
Tourism Inverell in Campbell Street, in close
proximity to the Central Business District.

Water is available **free of charge** from Inverell
Visitor Information Centre. See staff for tap
location. Own hose is required.

Drives or rides throughout the District



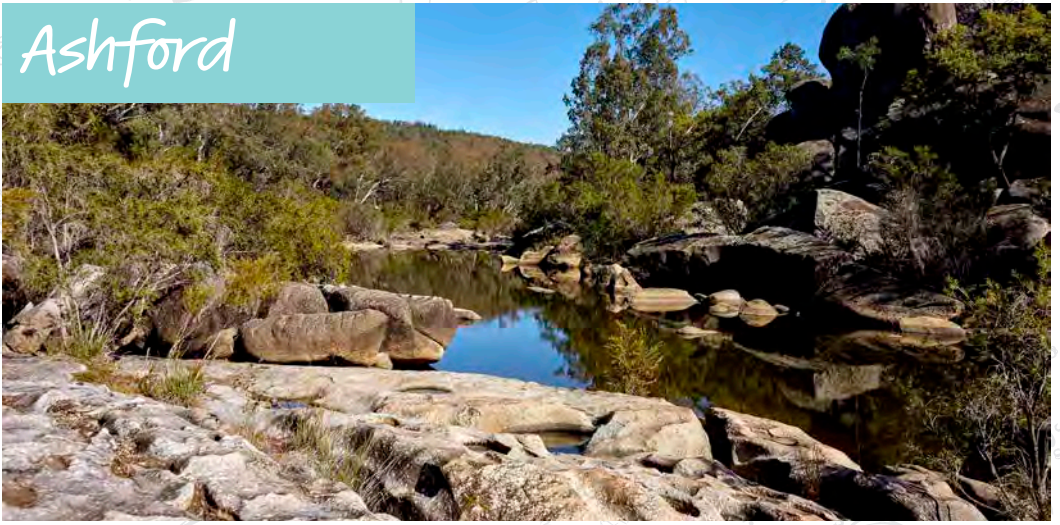
Diamond Route: Inverell > Copeton Dam > Bingara > Delungra > Inverell > Total 155 km

Crystal Route: Inverell > Gilgai > Tingha > Gilgai > Inverell > Total 54 km

Sapphire Route: Inverell > Graman > Wallangra > Ashford > Inverell > Total 144 km

Tourist Drive 3: Inverell > Bingara > Narrabri > Total 191 km

Ashford



Ashford “Cod’s Own Country”

Nestled against the banks of Frazers Creek, **Ashford** is a picturesque community which spreads out around a wide expanse of parkland through which meanders a water course that makes its way down to Frazers Creek. Located 57km north of Inverell.

The facilities in the town include a spacious **Caravan Park** with full amenities next door to the **Town Pool**, which is open through the summer months. A short walk across the road to the friendly atmosphere of the **Ashford Memorial Bowling Club**. Within the Central Business District you will find the **Post Office** and outlets for all your shopping needs. Here you will also find the **Ashford Rural Transaction Centre** where the friendly staff will help you with any tourism enquiries.

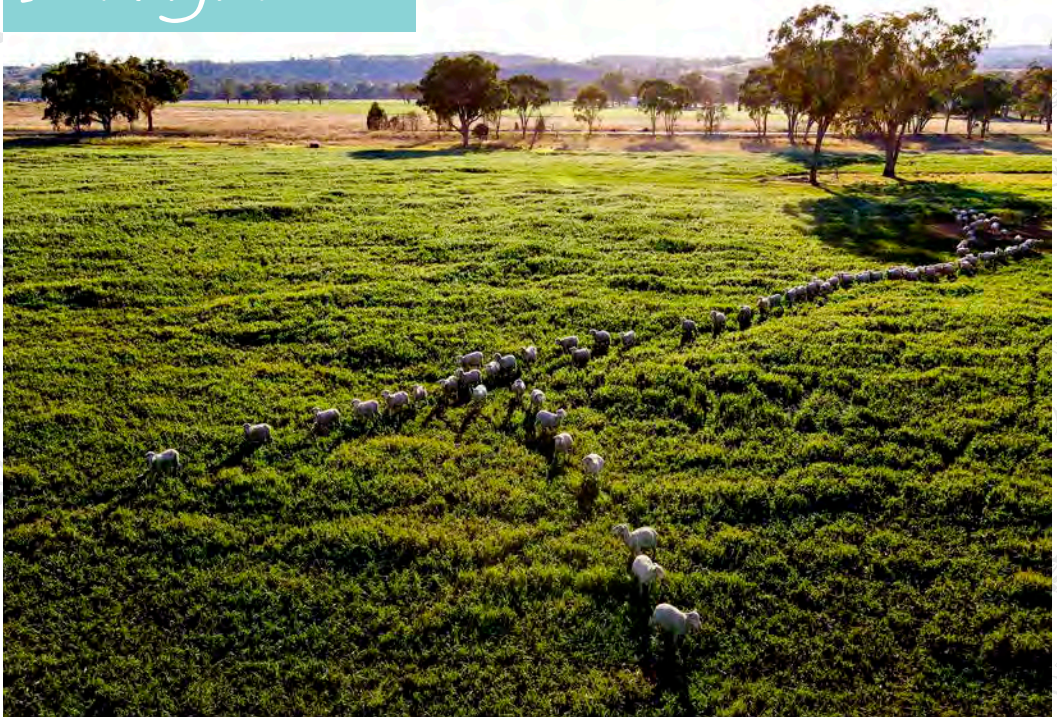
The district around Ashford is known as one of Australia’s premiere inland fishing areas. Within 45 minutes of Ashford you have access to 5 rivers, 2 dams and a weir. The Severn River in particular is renowned for it’s excellent freshwater fishing, with many native species caught, including Yellow Belly and Murray Cod.

Kwiambal National Park is located at the junction of the Severn and Macintyre Rivers. The park’s features include natural wonders such as the **Limestone Caves and Macintyre Falls** and caters for camping, fishing, bushwalking, canoeing and swimming.

For those who savour wide expanses of fresh water surrounded by spectacular scenery, **Pindari Dam** is just the place for you. Pindari Dam supports 13 different species of fish for the keen angler including Silver Perch, Catfish and Redfin. Enjoy swimming, fishing, boating, skiing or just plain relaxing.

Wells Crossing is a popular area for free bush camping and fishing and is located on the banks of the Severn River approximately 6km from Ashford on the Pindari Dam Road.

Delungra



Located just 32 km west of Inverell, **Delungra** is a traditional Aboriginal name meaning “**Water Weed or a Water Reed**”. Delungra is a small close knit community where everyone has a smile and knows each other by name.

For those travelling through, Delungra is a quaint village perfect for a break or to pick up some much needed travelling supplies. The town offers a fuel stop, convenience store, Post Office and caravan dump point. A cold beverage at the **Delungra Hotel** and overnight camping is available at the **Delungra Showground**. **Delungra Memorial Bowling & Recreation Club** offers delicious meals to tempt you after a big day exploring.

The **Myall Creek Memorial** monument stands on a ridge at the end of a 500m path and overlooks the site of the massacre, 20km south west of Delungra on the Delungra Road. 7 plaques set in granite boulders along the path give parts of the story in both English and Gamilaraay language, and have illustrations by Aboriginal artist Colin Isaacs. Stone benches front each plaque, giving visitors a place to sit and reflect. Myall Creek is now one of Australia's most important centres of reconciliation and was recognised as such when on the 170th anniversary the site was placed on the National Heritage List.

If you're looking for something a little bit different on your drive, then Delungra might be the perfect place for you to visit.



Gilgai “Place of Waterholes” is a small village located just 10km south of Inverell on the Thunderbolts Way. This locality provides rural style living with all the modern conveniences.

With a population of around 289, Gilgai is known as the **“Place of Waterholes”** and is a traditional Aboriginal name given by the Kamilaroi people meaning **“Small Waterhole”**.

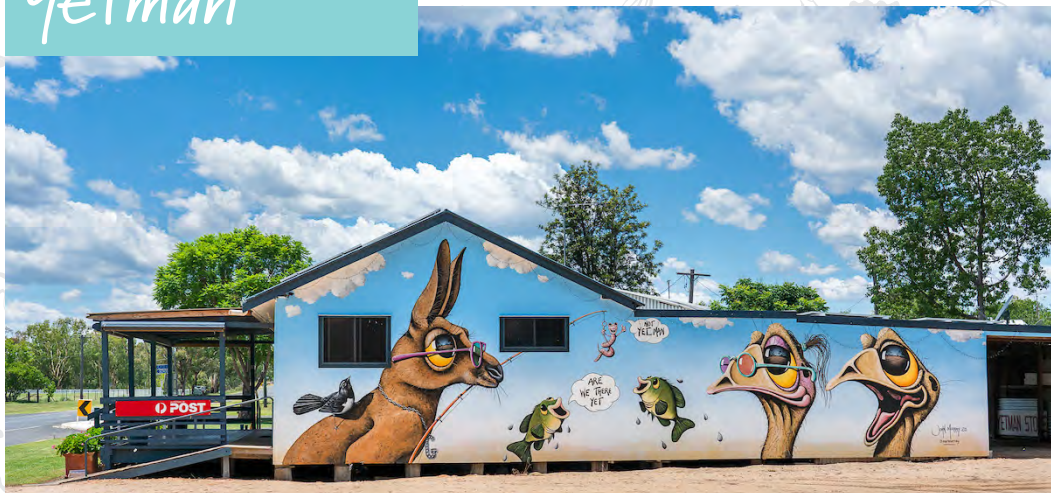
It's the kind of place where you can see excited children playing near the public school and enjoy the sound of tennis rackets returning a serve at the local tennis courts. The village is surrounded by bushland and you can regularly see the local wildlife.

For the traveller the **Gilgai General Store offers** all the necessary travelling conveniences including takeaway meals, fuel and supplies. With country hospitality at it's best, the store is open 7 days a week.

New England Woodturning & Sculptures is a woodworkers paradise. Located on Ponds Road the workshop is a hive of activity with woodworking demonstrations for visitors to enjoy. Ensure you explore the Yangoora Gallery of handcrafted timber giftware, woodturning supplies, didgeridoos and oddgeridoos. The sculpture garden is an absolute must see.

Inverell Airport is located on the outskirts of Gilgai and is available for scenic joy flights across the region.

Inverell Paintball was started in 2015 by Noel & Pat Kenny. Having played Paintball for the first time with his youngest son Ryan he found it a lot of fun and thought the Inverell area could benefit from having something new to do. He was right. And since 2015 his little hobby has seen a lot of people pass through it's wooden doors.



Located just 110km north of Inverell on the Bruxner Highway, **Yetman** is a great place to stop off on your journey. With an area population of 178 Yetman is situated on the meandering Macintyre River.

Known for it's rich agricultural lands, you can see cattle and sheep roam the endless fields. The area was once occupied by the **Bigambul**, a sub-group of the Murri Aboriginal people who once fished along the Macintyre River. The area was first established in 1837 by the Dights who followed Allan Cunningham's trail to the north.

With Yetman being close by the fresh waters of the Macintyre River there are many locations for the keen fisherman to throw in a line. Species that can be found in the area include Murray Cod, Yellowbelly, Catfish, Silver Perch and Redfin. Everyday is a great day for fishing in the Yetman area. This small rural community has all the necessary conveniences for those travelers passing with everything from fuel, to food and general supplies.

If you wanted to take a break from your journey the **Cod Fish Hotel** offers accommodation, cold beverages and hearty pub style meals.

The **Yetman Caravan Park** offers country hospitality in a quiet location. It features camping and van sites, washing machine facilities, clean amenities, accessible facilities, BBQ picnic area and is pet friendly. Across from the Caravan Park, Yetman has a playground available for use by children of all ages and those kids at heart.

Yetman is known for it's strong community spirit and welcoming demeanor and when visiting the village the residents make you feel like you are amongst friends.

Tingha



Tingha is a quaint township, a leisurely 24km drive south east of Inverell. The town is most famous for the wide scale tin mining in the area in the 1800s and 1900s.

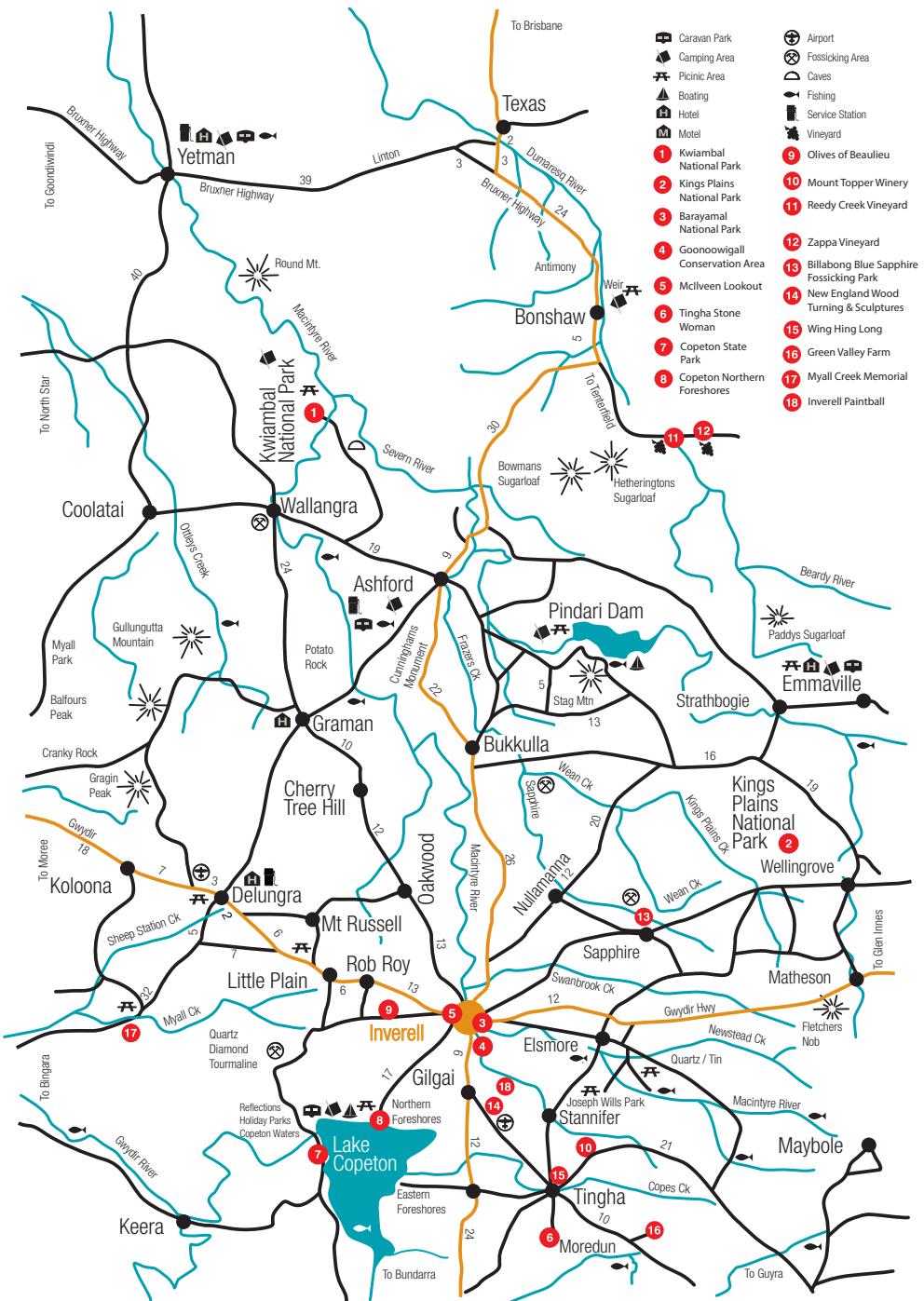
Tingha was established on Anaiwan land with the name believed to mean “flat or open land”.

In 1870, Tin was discovered in Tingha after an initial find north of Elsmore. At its peak, Tingha was the largest tin producing area in NSW, employing approximately 8,000 people, 2,000 of which were Chinese.

Wing Hing Long was purchased in 1881 by storekeeper, Ah Lin to establish a general store servicing the tin mining communities of the Tingha district. His was a typical general store where you could buy anything and everything. Today this amazing museum is open as a dedication to the Chinese miners who called Tingha home.

Green Valley Farm was born in the 1980's to create happiness, smiles, memories for children, big kids at heart and their families from all over the world. Family owned and operated, this Bush Oasis is a labour of love. Featuring a small zoo, water slide, numerous rides, camping and much more, this “piece of God's Earth put to wholesome pleasure” is a place you won't want to leave.

Toppers Mountain Wines. Over two decades, Mark Kirkby in close collaboration with winemakers Mike Hayes (Sirromet), Jared Dixon (Jilly Wines) & Glen Robert (La Petit Mort) has developed a vineyard & range of wines packed with exciting emerging varieties that revel in their terroir. Cellar door by appointment.

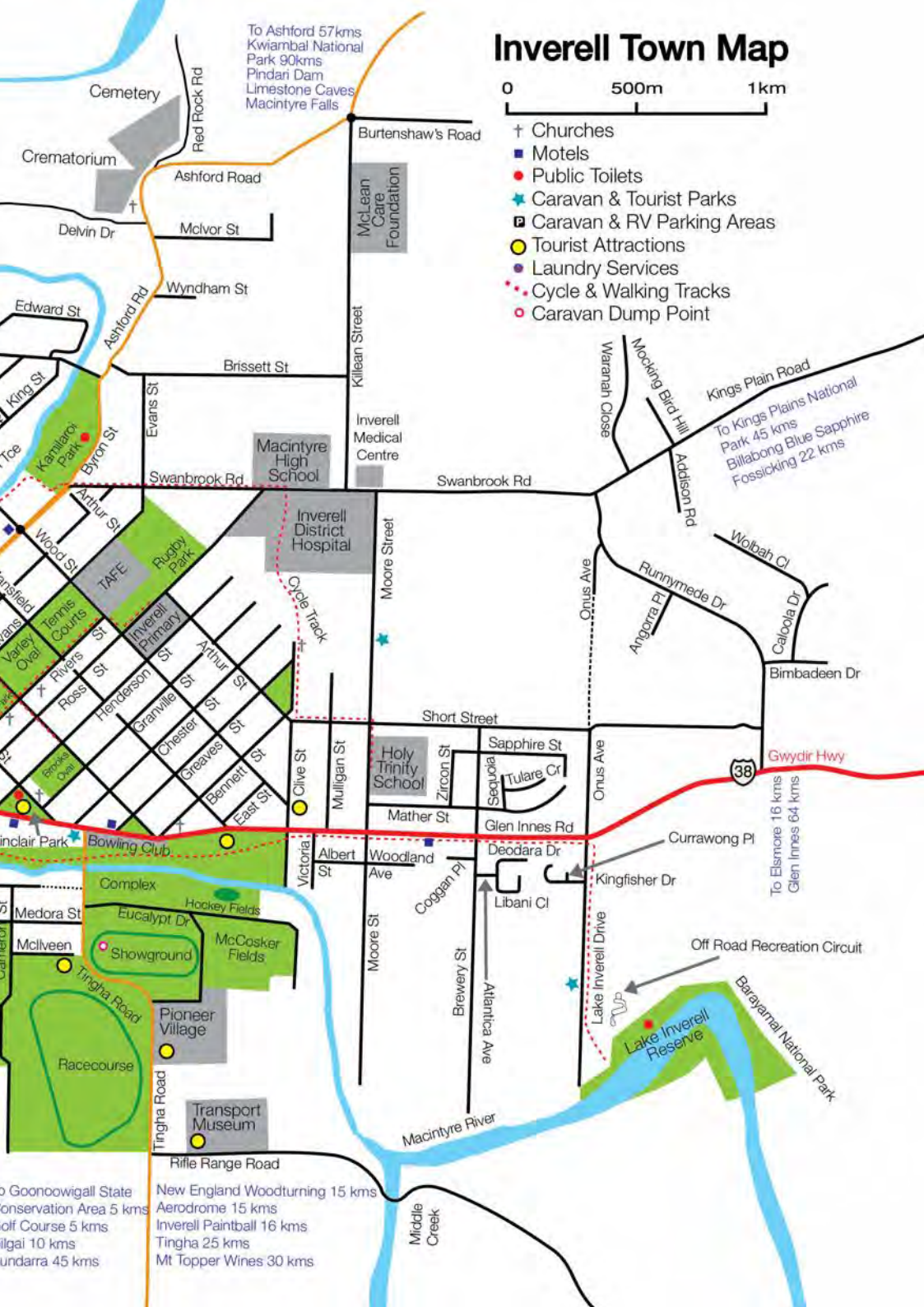




Inverell Town Map

0 500m 1km

- † Churches
- Motels
- Public Toilets
- ★ Caravan & Tourist Parks
- 🚐 Caravan & RV Parking Areas
- Tourist Attractions
- Laundry Services
- ... Cycle & Walking Tracks
- Caravan Dump Point



To Goonowigall State Conservation Area 5 kms
 To Golf Course 5 kms
 To Gilgai 10 kms
 To Undarra 45 kms
 New England Woodturning 15 kms
 Aerodrome 15 kms
 Inverell Paintball 16 kms
 Tingha 25 kms
 Mt Topper Wines 30 kms

Inverell Medical Services

DOCTORS

Armajun Aboriginal Health Services

1 Rivers St, Inverell
6721 9777

St Elmo Medical Practice

27 Oliver St, Inverell
6722 1999

Ashford Doctors Surgery

13 Jubilee St, Ashford
Ph: 6726 2030

Tingha Multi Purpose Service

13397 Guyra Rd, Tingha
Ph: 6723 3266

GP Clinic

Inverell Hospital
Moore St Entrance, Inverell
6721 9531

Hadana Surgery

152 Otho St, Inverell
Ph: 6721 0634

DENTISTS

Armajun Aboriginal Health Services

1 Rivers St, Inverell
6721 9777

Inverell District Hospital

Swanbrook Rd, Inverell
6721 9500

Inverell Dental Services

82 Campbell St, Inverell
6722 3218

Inverell Medical Centre

113 Swanbrook Rd, Inverell
6722 2855

Otho Dental

22 Sweaney St, Inverell
6722 3108

Macintyre Medical Centre

75 Otho St, Inverell
6722 3377

Watkins Dental & Orthodontics

16 Ross St, Inverell
6721 0254

Ross Street Surgery

4 Ross St, Inverell
6721 2763

Inverell Medical Services

CHIROPRACTORS

Inverell Chiropractic Centre

138 Otho St, Inverell
6722 3022

New England Chiropractic

46 Evans St, Inverell
6721 1500

CHEMISTS

Campbell and Freebairn Chemist

66 Otho St, Inverell
6722 3089

Dittons Pharmacy

77 Byron St, Inverell
6722 2639

Inverell Pharmacy

132 Byron St, Inverell
6722 3146

Inverell Medical Centre Pharmacy

113 Swanbrook Rd, Inverell
6722 2054

IMAGING

Inverell Diagnostic Imaging

35 Otho St, Inverell
6722 4248

PATHOLOGY

Douglas Hanly Moir

83 Otho St, Inverell
6722 4303
113 Swanbrook Rd, Inverell
6721 0422

Laverty Pathology

27 Oliver St, Inverell
6721 3372

Pathology New England

1/23 Lawrence St, Inverell
6722 1747

PHYSIOTHERAPISTS

Inverell Physio & Sports Injury Centre

100 Old Bundarra Rd, Inverell
6722 2583

Sally Sweeney Physio

27 Oliver St, Inverell
6722 2255

Vital Health

23 Lawrence St, Inverell
6721 4412

Wendy Alexander Physiotherapist

132 Otho St, Inverell
6721 1566

Inverell Guide To Local Op-Shops

1 Legacy Centre

79 Byron Street

Open Mon-Fri

9.00am to 2.30pm

Sat 9am to 12 noon

PH (02) 6708 4898

2 Salvation Army Red Shield Centre

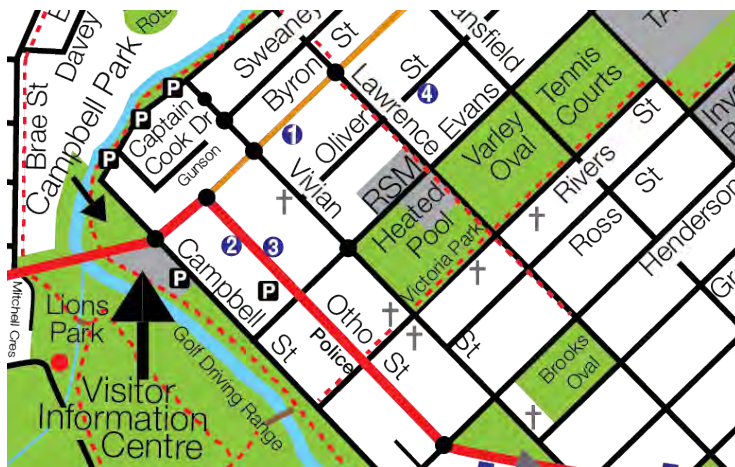
45 Otho Street

Open Mon-Fri

9am to 4pm

Sat 9am to 12 noon

PH (02) 6722 3008



3 BEST Community Shed

70 Otho Street

Open Mon-Fri

9am to 3pm

Sat 9.00am to 12 noon

PH (02) 6722 4946

4 St Vincent De Paul

31 Oliver Street

Open Mon-Fri

9am to 3pm

Sat 9am to 11am

Ph (02) 6722 2229

LEGEND



Facebook



Instagram



Pinterest



Wi-Fi



Toilets



Wheelchair
Access



Meals Available



Swimming Pool



Vegetarian



Pet Friendly



Gluten Free



Off Street
Parking



Brumby's Bakery

At Brumby's, we take pride in moulding the perfect creation born from simple ingredients. We share a passion and love for our craft like no other. We respect the history of artisan bakers that have come before us, and we honour their heritage with a fresh and creative approach.

📍 19 Otho St, Inverell

☎ (02) 6721 5212

🌐 www.brumbys.com.au/store/brumbys-inverell

✉ brumbysinverell@gmail.com



Fill Coffee

Keep it simple, make it great. We love to welcome visitors to our wonderful town with great coffee and authentic Inverell hospitality.

📍 21 Otho St, Inverell

☎ 0448 084 308

✉ fillcoffee@gmail.com



Freckles Café

Fresh and delicious food made daily, including sushi, salads, juices, smoothies, light meals, lunch & all day breakfast. Comfortable indoor and outdoor seating, kids & mothers areas. Function room available. Also call us for catering services.

📍 102 Byron St, Inverell

☎ (02) 6722 1612

🌐 www.frecklescafeinverell.com

✉ freckles@frecklescafe.com.au



Hey Joe Espresso Bar

Serving up specialty coffee as well as fresh homemade goodies daily. Small business with big heart.

📍 43 Otho St, Inverell

☎ 0478 608 406

✉ heyjoe.espressobar@gmail.com





Imperial Hotel

The Imperial Hotel is right in the heart of Inverell. The heritage architecture of the building reflects the style of the hotel, with accommodation upstairs and a traditional pub setting downstairs. Country hospitality with entertainment over the weekend.

📍 Cnr Byron & Otho Sts, Inverell

☎ (02) 6722 1511

🌐 www.imperialhotelinverell.com.au

✉ info@imperialhotelinverell.com.au



Inverell's Australia Café

One of the longest established cafés in Inverell, The Australia Café has a delicious menu to cater for all tastes. We can cater for larger functions, so contact us for details. We look forward to welcoming you soon. Open Monday to Friday, 7am -3pm.

📍 96 Otho St, Inverell

☎ (02) 6722 3382



Inverell RSM Club

Now is the time to become a member. The Inverell RSM Club is not just a club but a lifestyle. Great Food at Diggers Brasserie, Aromas Coffee Lounge, dine on the outdoor deck, or try the incredible tapas in the Rustic Table. With the best live entertainment, The RSM Club is the place to be.

📍 68-76 Evans St, Inverell

☎ (02) 6722 3066

🌐 www.inverellrsm.com.au

✉ admin@inverellrsm.com.au



Inverell Sporties

The Inverell Sporties, formally known as the Inverell East Bowling Club, is Inverell's home of entertainment! The venue includes a bistro, bar, a gaming lounge, function rooms, bowls greens, as well as a newly renovated TAB and sports room.

📍 35 Glen Innes Rd, Inverell

☎ (02) 6722 1545

🌐 www.inverellsporties.com.au

✉ office@inverellsporties.com.au



Eat & Drink



LB Hotbread

Scrumptious treats and all of your favourites. Award winning pies & sausage rolls. Authentic rice paper rolls made fresh every day.

📍 58 Otho St, Inverell

☎ (02) 6722 3300

✉ lbhotbread@gmail.com



McCafé Inverell

If you've ever wanted a café where you can have your favourite coffee & your choice of music & location, then good news. Our barista made coffee from McCafé is also available from the Drive-Thru. So make your car your Café.

📍 102 Byron St, Inverell

☎ (02) 6721 5200

🌐 www.mcdonalds.com.au/store/inverell-nsw



Ross Hill Store

One of Inverell's most popular takeaway restaurants! A delicious menu with something to suit every member of the family. Scrumptious burgers & tasty fish & chips. A lollie bar and a great range of handy convenience store items.

📍 36 Bannockburn Rd, Inverell

☎ (02) 6721 2803

🌐 www.facebook.com/Roshillstore



The Bridge Coffee Lounge

Open 5 days a week, The Bridge Coffee Lounge has an excellent menu from breakfast delights, scrumptious cakes and slices, to delicious light meals or something to really fill you up. We have a wonderful take away service with gluten free & dairy free options available.

📍 1 Otho St, Inverell

☎ (02) 6722 4295





The General Merchant

The General Merchant is a Café, Restaurant and Bar in Inverell. Open 7 days from 7am for breakfast, lunch and dinner. Fully licenced offering a range of craft beers and specialised wines.

📍 82 Byron St, Inverell

☎ (02) 6722 5971

🌐 www.facebook.com/thegeneralmerchantinverell

✉ mark@generalmerchant.com.au



The Tatts Hotel

The Tatts Hotel is a great place to catch up with friends, have a quite drink, or have a fantastic meal in the Tatts Restaurant. Looking for a place to have a punt in Inverell? The TAB at the Tatts is the place to be! Check out our Celebrations Bottleshop at the rear of the hotel for your takeaway needs.

📍 123 Byron St, Inverell

☎ (02) 6722 3437

🌐 www.tattshotel.com.au

✉ pubdream1@gmail.com



Topper's Mountain Wines

Single vineyard wines from close to Heaven! Over two decades Mark Kirkby, in close collaboration with winemakers Mike Hayes (Sirromet), Jared Dixon (Jilly Wine Co.) & Glen Robert (la Petite Mort) has developed a vineyard & range of wines packed with exciting emerging varieties that revel in their terroir. Cellar door by appointment.

📍 13420 Guyra Rd, Tingha (put Topper's Mountain Wines" into google maps for directions)

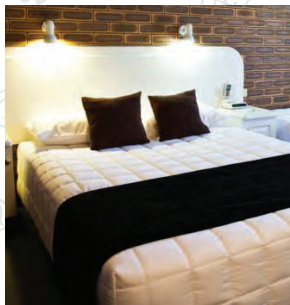
☎ 0431 752 910

🌐 www.toppers.com.au

✉ jan@toppers.com.au



Stay



Cousins Motor Inn

The motel is only a short walk to clubs, pubs & restaurants, making it an ideal place to stay for a day or week. Parking is off street & outside your room. It is regarded as a very quiet motel with rooms tucked away from the traffic noise.

📍 9-11 Glen Innes Rd, Inverell

☎ (02) 6722 3566

🌐 www.cousinsmotorinn.com.au

✉ office@cousinsmotorinn.com.au



Inverell Terrace Motor Lodge

BOOK DIRECT and SAVE

Staying for business or pleasure you can rely on us! 7 Minute walk to the CBD/restaurants. Modern, clean, quiet rooms, quality linens, split air-conditioning, free hi-speed Wi-Fi, mini bar, free parking. In house dinner and breakfast room service. 3 bedroom self-contained cottage also available.

📍 28 Warialda Rd, Inverell

☎ (02) 6722 5200

🌐 www.inverellterrace.com.au

✉ accommodation@inverellterrace.com.au



The Club Motel

Luxury 4 star accommodation. All with self contained kitchenettes, WiFi, Foxtel & breakfast facilities. Charge back available from the adjoining RSM Club. Covered walkway to the Club with a temporary membership while you stay. Ideal accommodation for weddings and conferences.

📍 58-62 Evans St, Inverell

☎ (02) 6721 0800

🌐 www.rsmclubmotel.com.au

✉ motel@inverellrsm.com.au



Top of the Town Motel

Top of the Town Motel offers quality accommodation in Inverell at an affordable price. We have a fully licensed a la carte restaurant & high-speed wireless internet. There is a full sized pool and BBQ facilities. For superior customer service, make a reservation at Top of the Town Motel today.

📍 137 Warialda Rd, Inverell

☎ (02) 6722 4044

🌐 www.topofthetowninverell.com.au

✉ stay@topofthetowninverell.com.au





Twin Swans Motel

Twin Swans Motel offers country hospitality, affordable modern accommodation & BBQ area. Short drive to town centre, pubs, clubs & restaurants. Sporting fields, hospital and churches all nearby.

📍 189-199 Glen Innes Rd, Inverell

☎ (02) 6722 2622

🌐 www.twinswansmotel.com.au

✉ stay@twinswansmotel.com.au



Inverell Caravan Park

Air conditioned ensuite cabins, powered and unpowered sites, excellent up to date amenities. Queen beds available, inground pool, covered BBQ area, coin operated laundry, linen hire, free WiFi, pets welcome. Privately owned and operated.

📍 21 Glen Innes Rd, Inverell

☎ (02) 6722 3036

🌐 www.inverellcaravanpark.com.au

✉ admin@inverellcaravanpark.com.au



Fossickers Rest Tourist Park

Situated in a quiet location away from all main roads (No Highway Noise) & only 3km East of the CBD. It is a short stroll from the beautiful Lake Inverell Reserve with its fishing, bird watching and over 7km of walking tracks. Ensuite sites, pool, BBQ & pets allowed on leash (sites only).

📍 Lake Inverell Dr, Inverell

☎ (02) 6722 2261

🌐 www.fossickersrest.com.au

✉ fossickers_rest@bigpond.com



Sapphire City Caravan Park

Lovely self contained villas & Cabins with split system reverse cycle air conditioners. Quiet park with large grassy treed drive through caravan & camping sites. Clean amenities, camp kitchen/BBQ area & pool. Pet friendly in camping area and some cabins.

📍 93-103 Moore St, Inverell

☎ (02) 6722 1830

🌐 www.sapphirecitycaravanpark.com.au

✉ admin@sapphirecitycaravanpark.com.au



Stay



Ashford Caravan Park

Located 56km north of Inverell on a major arterial road connecting the Gwydir & Bruxner Highways through to the QLD border. The Ashford Caravan Park is located in the heart of town & features camping & van sites, clean amenities, laundry, BBQ & Picnic area. Pets are welcome.

📍 Bukkulla St, Ashford

☎ (02) 6725 4014

🌐 www.inverell.com.au

✉ council@inverell.nsw.gov.au



Yetman Caravan Park

Located 110km north of Inverell on the Bruxner Highway, Yetman is the perfect place to stop off on your journey. The Yetman Caravan Park features camping & van sites, washing facilities, BBQ & picnic area & pets are welcome. Bookings can be made, or set up and Mrs Barry will see you. Honesty Box provided.

📍 59 Macintyre St, Yetman

☎ (07) 4675 3231 or (02) 6728 8200

✉ Council@inverell.nsw.gov.au



Blair Athol Boutique Hotel

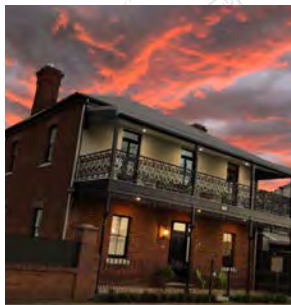
The ambience of Blair Athol begins as you drive up the tree lined driveway past heritage listed gardens, to the magnificent home built in 1904. Choose from a variety of room options. Treat yourself to a wonderful stay with old fashioned warmth & hospitality.

📍 Blair Athol Rd, Inverell (6km west on Gwydir Highway)

☎ (02) 6722 4288

🌐 www.blairatholestate.com.au

✉ blairatholestate@bigpond.com



Inverell Serviced Apartments & Property Services

Providing a variety of modern and restored fully furnished accommodation, short or long term stay available to suit your needs. All accommodation is located within walking distance of the CBD, have off street parking, full kitchens, laundries, air-conditioning, open plan living areas and free WIFI. Linen is also provided for your convenience.

📍 24 Sweeney St / Byron Arcade / 67 Vivian St Inverell

☎ 0414 933 507

🌐 www.inverellservicedapartments.com.au

✉ bookings@inverellapartments.com





Killarney Cottage B & B

A fully renovated mid-century cottage, set in the New England's peaceful countryside. It's our mission to provide you with comfortable, quiet accommodation in a tranquil rural setting. We strive to provide friendly, country hospitality.

📍 114 Hough's Lane Gum Flat

☎ 0458 924 164

🌐 www.facebook.com/Killarney-Cottage-Bed-Breakfast

✉ annaparsons07@gmail.com



Copeton Northern Foreshores

Put up a tent, throw in a line & relax in the peaceful surrounds. Close to town, but a world away. Just 17 kms out on the Auburn Vale Rd, the area has had a major upgrade with exceptional facilities, all weather boat ramp, powered and unpowered sites and incredible night skies.

📍 1873 Auburn Vale Rd, Inverell

☎ (02) 6723 0250

🌐 www.inverell.com.au/business-listing/northern-foreshores-copeton-dam



Reflections Holiday Parks - Copeton Waters

Set on 900 hectares of beautiful bushland, this getaway is for fisher folk, water skiers and fun adventures with the whole family at the water park and jumping pillow. We offer sites, cabins and a conference centre ideal for weddings, school trips or corporate retreats.

📍 3533 Copeton Dam Rd, Inverell

☎ (02) 6723 6269

🌐 www.reflectionsholidayparks.com.au/park/copeton-waters

✉ copetonwaters@reflectionsholiday.com.au





Billabong Blue Fossicking Park

Premium location just 22km from Inverell. Try your luck fossicking for the famous Inverell sapphires. Fun for all ages! Bring your sunscreen, hat, water & suitable shoes. Bush camping available on site, separate fee applies. Toilets and bush shower on site.

📍 2479 Kings Plains Rd, Inverell

☎ (02) 6721 0500



Blair Athol Day Spa

Inspired by the Roman Bathhouses of the past with grand columns and an atrium roof, the Day Spa houses a 10.5m mineral-rich mineral pool and a 6-person mineral-rich spa. Guests can use the oil-infused infra-red sauna or book a treatment in one of the beautifully appointed massage suites.

📍 Blair Athol Rd, Inverell

☎ (02) 6722 4288

🌐 www.blairatholestare.com.au

✉ blairatholestare@bigpond.com



Green Valley Farm

Born in the 1980s to create happiness, smiles & memories for children, big kids at heart and their families from all over the world. 'Our piece of God's Earth put to some wholesome pleasure'. Visit our theme park, museum, waterpark & stay for a while in our beautiful cabins.

📍 New Valley Rd, Tingha

☎ (02) 6723 3370

🌐 www.greenvalleyfarm.com.au

✉ vickeryclan@activ8.net.au



Inverell Art Gallery

Regular and diverse exhibitions are held featuring local and visiting artists. The Gallery also operates a beautiful giftshop, selling original arts and crafts. Entry is by donation.

📍 5 Evans St, Inverell

☎ (02) 6722 4983

🌐 www.inverellartgallery.com.au

✉ info@inverellartgallery.com.au





Inverell Pioneer Village

Come and see the Pioneer Village for yourself. Set your own pace, bring a picnic lunch & enjoy the tranquility of days gone by. Immerse yourself in Inverell's pioneering past. Venue hire, Weddings, Family reunions and other events.

📍 Tingha Rd, Inverell

☎ (02) 6722 1717

🌐 www.inverellpioneervillage.org.au

✉ info@inverellpioneervillage.org.au



National Transport Museum

With over 200 members and 120 vehicle exhibits, the National Transport Museum has it all. Some of the vehicles on display include a 1906 Dayton (believed to be the only one left worldwide), 1912 Renault, various Holdens and Fords including GT Falcons, 1926 Diana, solar cars and much more.

📍 69 Rifle Range Rd, Inverell

☎ (02) 6721 2270

🌐 www.nationaltransportmuseum.com.au

✉ transportmuseum@bigpond.net.au



New England Woodturning & Sculptures

Modern gallery full of handcrafted quality timber giftware including traditional didgeridoos and unique oddgeridoos. Rob's entertaining didgeridoo performances cater for all. Group bookings by appointment. Take a leisurely walk around the beautiful grounds to view the scrap metal sculptures and tree carvings.

📍 29 Ponds Rd, Gilgai

☎ (02) 6723 1350

🌐 www.newagemultimedia.com/woodwork

✉ newts@newagemultimedia.com



Olives of Beaulieu

Experience the taste sensations of our Extra Virgin Olive Oil, infused oils, olives, exotic estate spice blends, hot sauce & try our local olive oil cosmetics. The olive tree is a symbol of "Joy & Peace". Coach tours & groups welcome.

📍 439 Copeton Dam Rd, Inverell

☎ (02) 6722 1458

🌐 www.olivesofbeaulieu.com.au

✉ olives@olivesofbeaulieu.net.au



Retail & Services



Allied Health Professionals Inverell

Inverell and its surrounds have a diverse range of allied health professionals, many without a shop front presence making it challenging for people to find and access them readily. The Allied Health Professionals Inverell website aims to connect you to an allied health professional that suits you and your needs. Simply browse through the directory or search for the service you desire.


 www.alliedhealthprofessionalsinverell.org





Barry's Motors

For more than 50 years the friendly staff at Barry's Motors have been selling and servicing new and used vehicles in the Inverell area and surrounding region. Barry's Motors is an award winning car dealership, recognised for excellence in sales, service and customer satisfaction.

 199 Byron St, Inverell

 (02) 6722 1433

 www.barrysmotors.com.au


 reception@barrysmotors.com.au



Craze Dance Academy & Dancewear

Our aim is to provide quality dance tuition & care, that encourages and supports the physical & emotional development of each individual, to grow and enhance their love of dance.

 18 Sweaney St, Inverell

 (02) 6721 2339

 www.crazedanceacademy.com


 crazedanceinv@hotmail.com



Billabong Blue Sapphires

We specialise in local sapphires from rough stones to finished products. Cut to order with jewellery and souvenirs at great prices. Coaches & groups welcome. Sapphire are faceted on the premises. We have a unique and extensive range of quality jewellery.

 Visitor Information Centre Complex, Campbell St, Inverell

 (02) 6721 0500

 www.facebook.com/billabongbluesapphire





Clover & Co.

A stylish haven located in Inverell with a passion for supporting Australian brands & artisans. The store includes home, gift & baby, as well as women's apparel and also houses an amazing coffee shop (Hey Joe).

📍 43 Otho St, Inverell.

☎ (02) 6721 0745

🌐 www.cloverandco.com.au

✉ hello@cloverandco.com.au



Compleat Angler & Camping World

We are your local Weber specialists. With a large range of equipment & supplies for the keen angler, you won't have to worry about the one that got away. We have everything for the camper, including the kitchen sink. Your one stop fishing & camping store.

📍 122 Byron St, Inverell

☎ (02) 6722 3620

✉ stoxda@bigpond.com



Campbell & Freebairn Chemist

Campbell and Freebairn Chemists is Inverell's only locally owned and operated pharmacy, providing Professional service and Personal Care. Our pharmacists are on hand for health and medicines advice. We offer many health related services, including a consultant naturopath, and proudly provide a distance dispensing service to Ashford.

📍 66 Otho St, Inverell

☎ (02) 6722 3089

🌐 www.campbellandfreebairn.com.au

✉ sales@mooc.com.au



Ditton's Pharmacy

Ditton's pride themselves on providing excellent customer service. We aim to give customers whole health solutions by offering free blood pressure, blood glucose & medication checks. We can also pack your medication using our dose administration aid system.

📍 77 Byron St, Inverell

☎ (02) 6722 2639

🌐 www.alliancepharmacy.com.au/dittons-pharmacy

✉ dittons@alliancepharmacy.com.au



Retail & Services



Eclectic House

We are a small country store with a big global conscience. We are ambassadors for the slow fashion movement. We value the ethical and sustainable production of clothing and offer our own considered collection and other Australian labels.

📍 64 Otho St, Inverell

☎ (02) 6721 0370

🌐 www.eclectichouse.com.au

✉ enquiries@eclectichouse.com.au



Ellati

Ellati showcases beautiful clothing, leather handbags, Italian & Spanish footwear. This stylish boutique has a reputation for high service and assistance in styling your look. Choose from a huge range of top brand names to make you look your best.

📍 10 Otho St, Inverell

☎ (02) 6722 4871

🌐 www.facebook.com/ellati.inverell.7

✉ margbrady@bigpond.com



Emporium

Emporium on Otho St. Fantastic Café with home cooking made fresh daily and amazing shopping. Come in for the experience and enjoy friendly service in a wonderful atmosphere.

📍 50 Otho St, Inverell

☎ (02) 6722 4214

🌐 www.emporiumonbyron.com.au

✉ elisemcdonald@bigpond.com



Funki Munki

Funki Munki is your healthy general store, catering to the socially and environmentally conscious, gourmet foodie or special dietary needs customer. Funki Munki supplies fresh, frozen and packaged foods, personal and baby care items, house, garden and pet care items as well as many gift ideas.

📍 21 Otho St, Inverell

☎ (02) 6721 1305

🌐 www.funkimunki.com.au

✉ info@funkimunki.com.au





Workwear & Safety

Hip Pocket Workwear and Safety

Hip pocket stocks a wide range of safety gear and corporate workwear. The friendly staff offer the right advice on the right product everytime. The in-house embroidery service means that we are your one stop shop for all your uniform, equipment and safety needs.

📍 213-215 Byron Street, Inverell

☎ (02) 6721 0872

🌐 www.hippocketworkwear.com.au/inverell

✉ inverell@hippocketworkwear.com.au



Inverell 4WD Centre

All equipment is fitted in our on-site workshop. We also do your repairs, services & rego checks. Stockists of ARB 4x4 accessories, bull bars, tow bars, side rails & steps, canopies, Rhino rack systems, recovery gear, safari snorkels & much more.

📍 250 Byron St, Inverell

☎ (02) 6721 2516

🌐 www.inverell4wd.com.au

✉ sales@inverell4wd.com.au



Inverell Boats & Caravans

Caravan repairs & service. Jayco authorised repairer. Insurance repairs, trailer parts & service. We are an experienced specialist provider of repairs, servicing and accessories for all RV vehicles including caravans, camper trailers and motor homes.

📍 233 Byron St, Inverell

☎ (02) 6722 2844

🌐 www.motormeccainverell.com.au

✉ sales@motormeccainverell.com.au



Inverell Coaches

If you're looking to hire a reliable and quality charter bus for running a tour, school excursions or anything else, We have a fleet of reliable and quality buses and coaches. We provide experienced professional staff and quality and reliable coaches and buses - no trip is too big or too small.

📍 25-27 Brissett St, Inverell

☎ (02) 6722 3598

🌐 www.inverellcoaches.com

✉ admin@inverellcoaches.com.au



Retail & Services



Inverell District Family History Group

Open Monday, Wednesday, Friday from 10am - 3pm and Saturday by appointment. Providing assistance, advanced facilities, skills & local knowledge to help you research your family heritage.

📍 55-59 Campbell St, Inverell (Inverell Shire Library)

☎ 0428 214 272

🌐 <https://inverell.nsw.gov.au/inverell-family-history-group>

✉ inverellfamilyhistorygroup@gmail.com



Inverell Newsagency

Inverell Newsagency is a locally owned, family newsagency that sells a wide variety of products including stationery, packing products, magazines and books. We are your local lucky lottery agents and offer competitive prices. Come and see our wide range of Newspapers.

📍 44 Otho Street, Inverell

☎ (02) 6722 1107

✉ otho@inverellnewsagency.com.au



Inverell Shire Public Library

The library has an extensive collection of books, magazines & DVDs for loan. Free computer access, internet & WiFi hotspots available. Regular activities for children & teens to promote literacy & a love of reading. Qualified staff on hand to assist you.

📍 55-59 Campbell St, Inverell

☎ (02) 6728 8130

🌐 www.inverell.nsw.gov.au

✉ library@inverell.nsw.gov.au



Liberty Service Station

Remember when you went to the service station and didn't have to get out of your car? That's the service you still receive at the Liberty Service Station. Competitive prices and mini-mart for your necessities.

📍 24 Glen Innes Rd, Inverell

☎ (02) 6722 3349

🌐 www.libertyoil.com.au

✉ libertyinverell@fuelservo.com.au





Magnolia Home & Gift

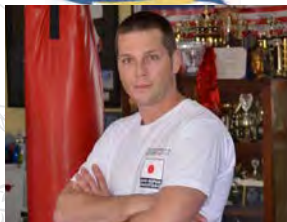
Magnolia could be the shop that inspired the term "Retail therapy". We are the local stockist of Elk, Glasshouse, Peppermint Grove, Toshi, Maxwell & Williams and many more. We offer unique & elegant home and giftwares and you won't walk out empty handed. We also offer online shopping.

📍 40-42 Otho St, Inverell

☎ (02) 6721 4666

🌐 www.magnoliahomeandgiftinverell.com

✉ magnoliahg@bigpond.com



Nick King's Lifestyle Centre

Nick King is a 7th Degree Black Belt and 5 times World Koshiki Karatedo Champion. Tai Chi, King Fit, Yoga, Martial Arts, MMA, Kickboxing, Brazilian Jiu Jitsu (BJJ), Self defence classes and Boxing. All ages and abilities catered for. New students welcome.

📍 Cnr Evans & Lawrence Sts, Inverell

☎ (02) 6721 1112, 0421 088 006

🌐 www.nickking.com.au

✉ nickkinglifestylecentre@gmail.com



Posties

Your First Choice



Posties Caravans, Boats & Small Engines

For over 35 years Posties Caravans, Boats & Small Engines, together with Posties Hunting & Fishing have been providing excellence in customer service and the highest quality servicing, repairs and sales to the Inverell Fishing and Hunting area. Now also is ammunition dealer.

📍 219 Byron St, Inverell

☎ (02) 6722 5020

🌐 www.postiescaravans.com.au

✉ admin@postiescaravans.com.au



Print Fresh

Print Fresh is your local leader in printing, signage & uniforms. With modern printing technology and tertiary qualified designers, Print Fresh provides Inverell and the surrounding areas with the most creative, efficient branding solutions.

📍 1 Henderson St, Inverell

☎ (02) 6722 1655

🌐 www.printfresh.com.au

✉ sales@printfresh.com.au



Retail & Services

Pro Active —HEALTH & FITNESS— FOR YOUR BODY & MIND



Pro-Active Health & Fitness

At Pro Active Health & Fitness you will be able to achieve your personal health and wellness goals. Whatever your goal may be, from weight loss, increased fitness, flexibility, firming, toning or all of the above. We can help you achieve these results. Enjoy working out in a welcoming and friendly atmosphere.

📍 146-150 Sweaney St, Inverell

☎ (02) 6722 5225

🌐 www.proactivegym.com.au

✉ admin@proactivegym.com.au



Ross Hill Public School

We place a strong emphasis on student wellbeing, academic excellence, leadership, creative and practical arts, sport, cultural inclusivity, environmental awareness and technology.

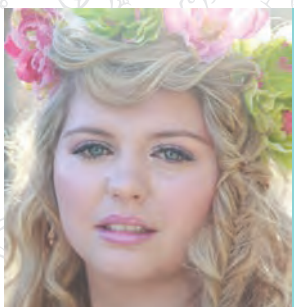
Excellence, Innovation, Community

📍 16 Andrew St, Inverell

☎ (02) 6722 2475

🌐 www.rosshill-p.schools.nsw.gov.au

✉ rosshill-p.school@det.nsw.edu.au



Shabu Hair

Shabu Hair on Byron for hair cutting, colouring & styling, hair and beauty products. See our unique selection of lovely fashion accessories, all set out in our charming cottage & courtyard setting.

📍 232 Byron St, Inverell

☎ (02) 6722 3859

🌐 www.facebook.com/ShabuonByron

✉ shabu-hair@hotmail.com



Sheppards Jewellers

Come and browse through the magnificent range of jewellery, accessories, clocks and giftware. Jewellery designed and made to order. Repairs done onsite by qualified jewellers. Service with a smile from those in the know.

📍 67 Byron St, Inverell

☎ (02) 6722 2114





Simply Print Anything

We are a family owned signage company with over 25 years experience in the industry. With skilled staff, quality materials and expanding technology, Simply Print Anything will give you the best results every time.

📍 2 Swanbrook Rd, Inverell

☎ (02) 6721 0488

🌐 www.printanything.com.au

✉ admin@printanything.com.au



Symes Coaches

Symes Coaches provide modern and safe coach travel. Join us on one of our Coach Tours, or Charter a bus for your next sporting event or conference. With over 60 years experience, Symes Coaches can make your experience a safe and enjoyable one.

📍 37 Mansfield St, Inverell

☎ (02) 6722 1897

🌐 www.symescoaches.com.au

✉ info@symescoaches.com.au



The Gem Centre

Is fossicking on your bucket list? Get your equipment from The Gem Centre and WE will show you what to do. Our team is friendly & knowledgeable. Are you looking for something special in sapphire? Come and see our range of beautiful gold & silver jewellery.

📍 108 Byron St, Inverell

☎ (02) 6722 1290

🌐 www.thegemcentre.com.au

✉ thegemcentre@gmail.com



Vivier Boutique

Vivier Boutique is a shop to spend a little bit of time browsing through. Stocking ladies clothing, footwear, handbags, jewellery & all accessories. It's a store of "Fashion with a Difference".

📍 18 Otho St, Inverell

☎ (02) 6721 4483

🌐 facebook.com/Vivier-Boutique

✉ vivierboutique@bigpond.com



Produced by Inverell Visitor Information Centre (Inverell Shire Council). Published & distributed in 2021. Concept and design adaptation by Peter Caddey - Manager Tourism & Marketing. Printing by Print Fresh Inverell. Photographs by Lawrence Furzey, Girt by Sea Photography, Peter Caddey Photography and Mary Wheeler. Inverell Shire Council would like to acknowledge and thank all local people who modelled for photos, provided props, advertised, provided information for copy and helped put the publication together.



Tourism Inverell

Inverell Visitor Information Centre

11-31 Campbell Street, Inverell

Phone: 1800 067 626 or (02) 6728 8161

Email: tourism@inverell.nsw.gov.au

Web: www.inverell.com.au

Open every day except

Good Friday & Christmas Day

Monday - Friday 9.00am - 5.00pm

Saturday - Sunday 9.00am - 2.00pm

(including public holidays)



Scan this QR Code with a QR Reader and you will be directed straight to our Tourism website: www.inverell.com.au